

# Self-Adjusting Cutter-Stripper

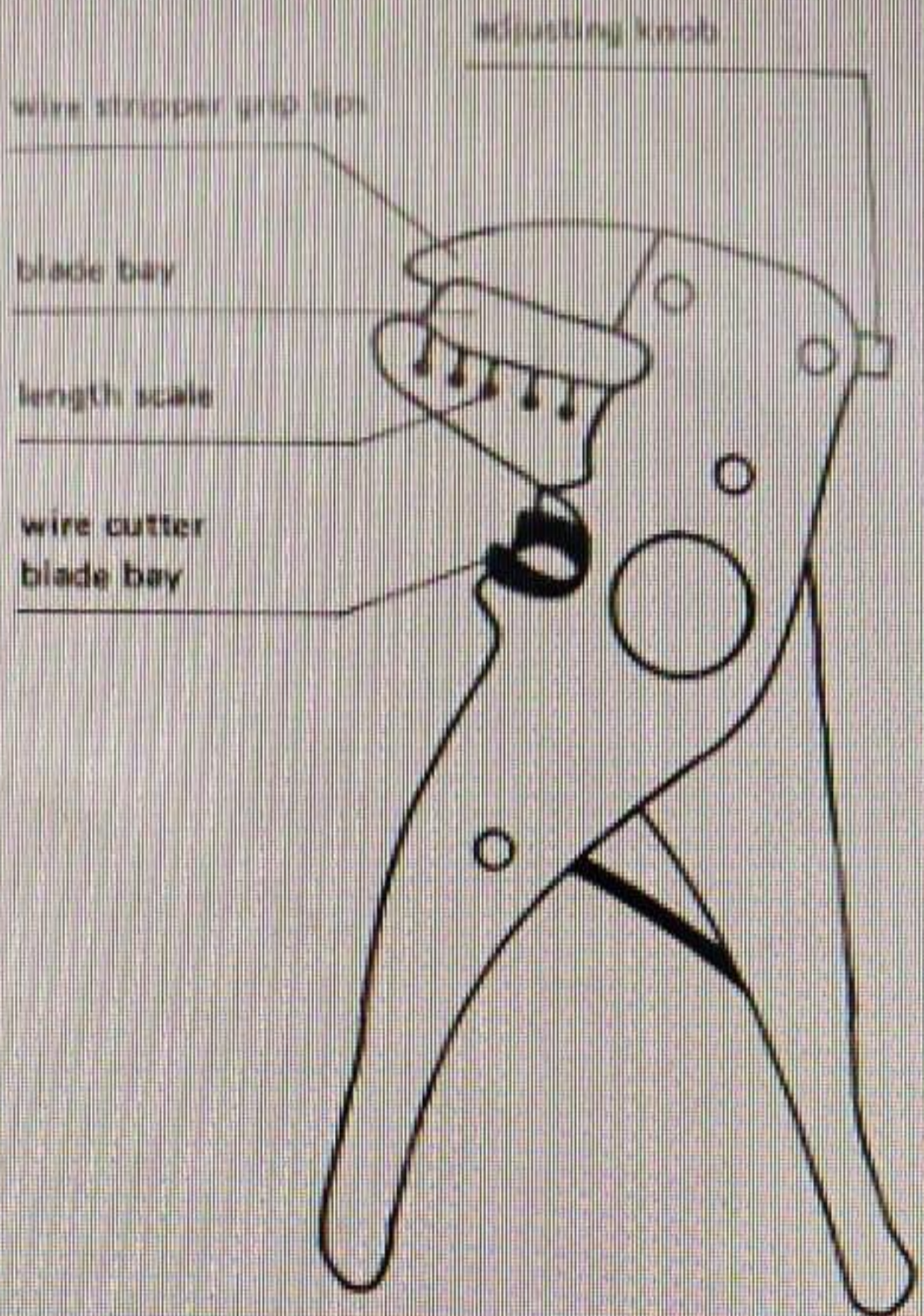
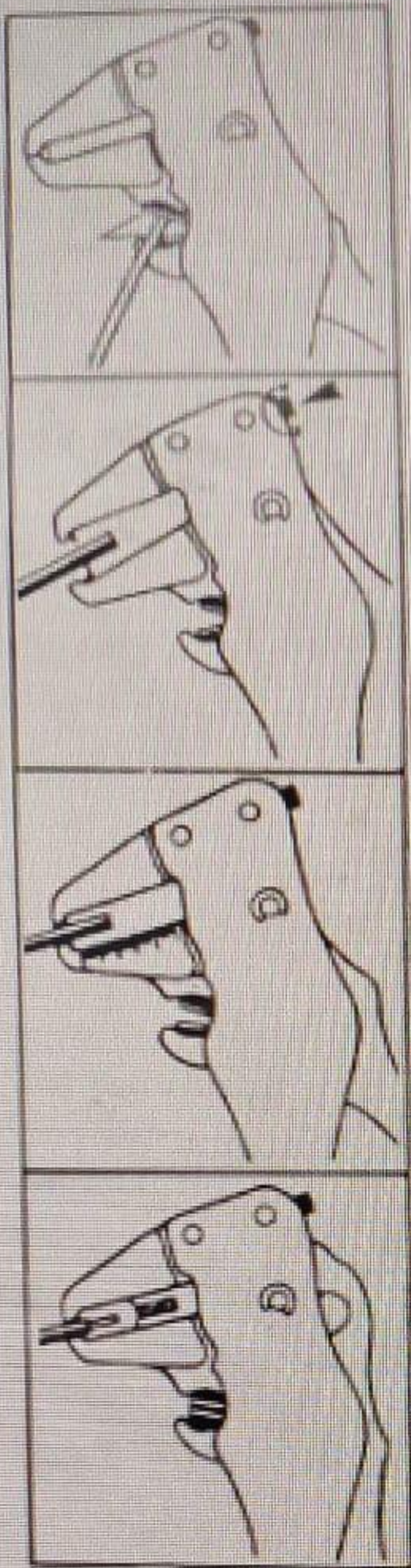
- Durable  
Tempered  
Steel

- For single  
or Multiple  
Cables

- Pressure  
Adjustment  
of the Blades  
for Soft and very  
Hard Sheaths.

- Harmless  
to Conductor





#### TO CUT WIRE

- insert wire into wire cutter blade bay.
- squeeze handle.

#### TO STRIP WIRE

- determine amount of insulation to be cut away.
- turn adjusting knob clockwise for stripping thinner wire and counter clockwise for heavier wire.
- insert wire in stripper bay to desired length.
- hold firmly with fingers at edge of grip lips.
- squeeze handle.